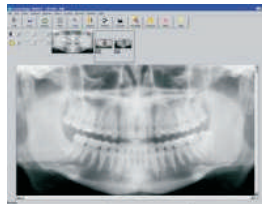
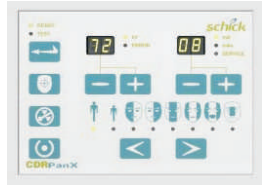


CDRPanX



A SCHICK TECHNOLOGY trouxe a imagem digital panorâmica para um novo nível de simplicidade e qualidade.

O CDRPanX apresenta o Sensor digital SCHICK CDR que processa imagens clinicamente precisas.

Oito programas de imagens diferentes e 3 raios laser de alinhamento

Alinhamento vertical superior que permite trabalhar com qualquer tipo de pacientes inclusive em cadeira de rodas

Schick Technologies has brought digital panoramic imaging to a whole new level of affordability and simplicity.

FIRST—CDRPanX features proven Schick CDR digital imaging technology and renders crisp, clinically accurate images.

SECOND— Only slightly more expensive than most film-based systems, CDRPanX eliminates costly panoramic film and processing - increasing your economic efficiency.

THIRD— CDRPanX is a perfect complement to offices that use digital intra-oral sensors, including Schick's best-selling CDR and CDRWireless sensors.

FOURTH—Eight different imaging modes and three laser alignment beams for optimal exposures.

FIFTH—Superior vertical travel allows it to be used with patients of any height, including those in wheelchairs.

CDRPanX-C



ONE-SHOOT SYSTEM

X-Ray Tube: OCX105

Focal spot size: 0.5 IEC 336

Minimum total filtration: 2.5 mm Al

Anode Voltage: 60-86kV (2kV increments)

Anode Current: 4, 5, 6.3, 8, and 10mA

Exposure time: 19s - adult panoramic

Power Supply: 115V, 50/60Hz

Fusing: T8A

Weight: 474lbs

Electrical Safety Classification: Class 1, type B



Imaging modes (Exposure times): adult (19s), child (15s), left half (10s), right half (10s), anterior (8s), TMJ opened and closed (4x4s), frontal sinuses (8s)

Patient Positioning: 3 laser alignment beams (mid-sagittal, Frankfort, focal trough)
bite guide, chin rest, optional temple support



LICENCIAMENTO
DAS INSTALAÇÕES

PROJECTO PROT. RAD.
MANUAL PROT. RAD.